

THERMOFOAM®

Insulating your house is an important first step towards ensuring your comfort and well-being.

Product Overview

Nudura offers a complete range of expanded polystyrene (EPS) insulation products to use in your renovation and construction projects.

THERMOFOAM® 2 ft x 8 ft (610mm x 2438mm) insulation differs from conventional insulation products. THERMOFOAM features a unique interlocking design which provides easier installation and air tightness.

THERMOFOAM is available in thicknesses of 1 1/4in (32mm), 1 7/8in (48mm) and 2 1/2in (64mm) and offers R-values of R-5 (RSI 0.88, U-value 1.14) to R-10.5 (RSI 1.85, U-value 0.54) with three different foam densities to better meet the many insulation requirements of all types of construction.

Features & Benefits

- Excellent quality-price ratio
- Permanent insulation value
- For interiors and exteriors of any type of construction
- Increased energy savings
- 100% recyclable
- Eco-friendly - No CFCs or HCFCs
- Resistant to water and moisture
- Flexibility to cut any shape or size
- Molded board: superior physical properties



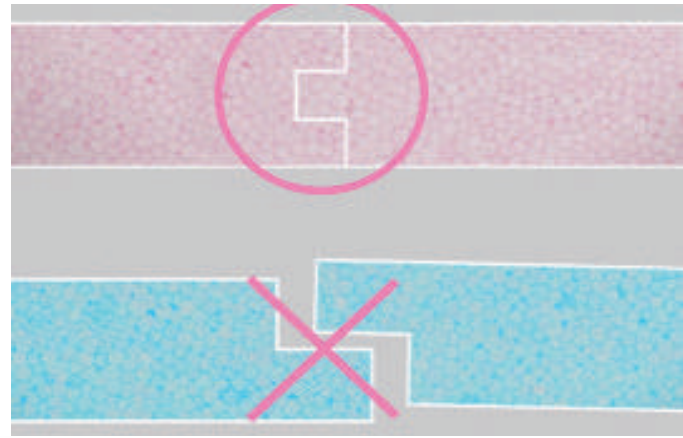
Installation Tips

Installation of THERMOFOAM is quick and easy!
Use the offcut from the first row for the next row so the joints can be staggered.

Seal around service penetrations and other obstructions with Nudura Low-Expansion Spray Foam.

Place the THERMOFOAM panels together using the unique interlocking system.

If necessary, install a vapor barrier membrane



Warning

Flammable: Interior applications require a thermal barrier or ignition barrier as required by local building codes. All installations must comply with the applicable local building codes. The information and suggestions contained in this brochure are provided solely for informational purposes and are offered in a spirit of collaboration. To our knowledge, we believe the information presented can be considered reliable. This brochure shall not constitute, in any case, a REPRESENTATION or a WARRANTY either EXPRESS or IMPLIED, either in terms of the information, data and suggestions included, or with respect to the absence or violation of any patent or other rights of third parties. Any proposed applications must be evaluated beforehand according to the application context and must, as a result, be adapted or modified to suit local conditions and materials if necessary.

ISO 9001:2015

Certified quality management system ISO 9001:2015



The expanded polystyrene used for THERMOFOAM® boards is Warnock Hersey (WH) certified in accordance with CAN/ULC S701 and ASTM C578 standards.



Building Code

We recommend using professional services and referring to the applicable local building codes when installing THERMOFOAM. For more details or for other types of installations, please go to www.nudura.com or call our experts at 1-866-468-6299.

Nudura Inc. | 27 Hooper Road, Unit 10 | Barrie, ON L4N 9S3 | 866.468.6299 | nudura.com

Tremco CPG brings together Tremco Incorporated's Commercial Sealants & Waterproofing and Roofing & Building Maintenance operating divisions; Dryvit Systems, Inc.; Nudura Inc.; Willseal; Weatherproofing Technologies, Inc. and Weatherproofing Technologies Canada, Inc.

 **TREMCO**
Construction Products Group

Nudura® is a registered trademark of Nudura Inc.
Use of the ® symbol indicates registration with the US Patent & Trademark Office and the Canadian Intellectual Property Office.

07/2020

tremcocpg.com