

WEBS 8" (203mm)
O.C.

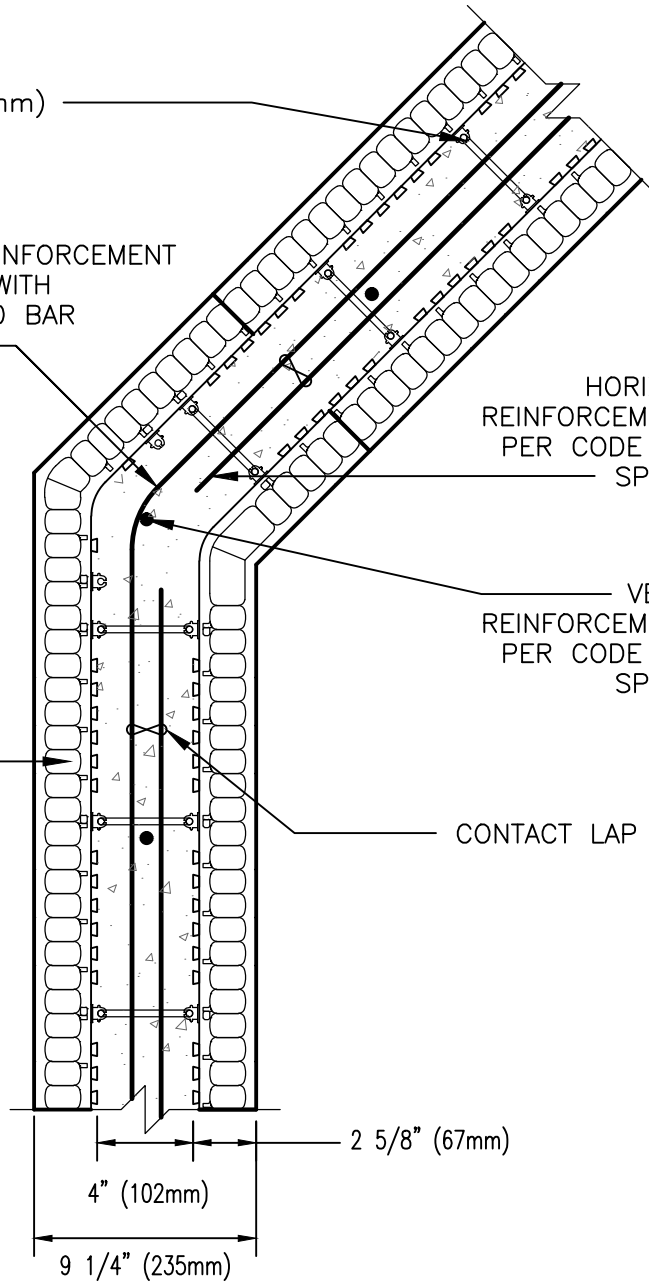
HORIZONTAL REINFORCEMENT
BENT AROUND WITH
MIN. LAP OF 40 BAR
DIAMETERS

HORIZONTAL
REINFORCEMENT AS
PER CODE OR AS
SPECIFIED

VERTICAL
REINFORCEMENT AS
PER CODE OR AS
SPECIFIED

NUDURA 45°
4" (102mm)
FORM UNIT

CONTACT LAP SPLICE



DISCLAIMER NOTICE:
SPECIFIC INFORMATION
REQUIRED FOR COMPLIANCE
WITH LOCAL CODES IS THE
RESPONSIBILITY OF THE
DESIGNER



NUDURA

INTEGRATED BUILDING TECHNOLOGY

Building Value.

NUDURA 4" (102mm)
45° FORM REINFORCEMENT DETAIL
PLAN VIEW

REV. NO.
002 TV

DATE:
APR 2007

DRAWN BY:
N. LEMMON

DWG NO.

A4B03

SCALE:
1 : 8