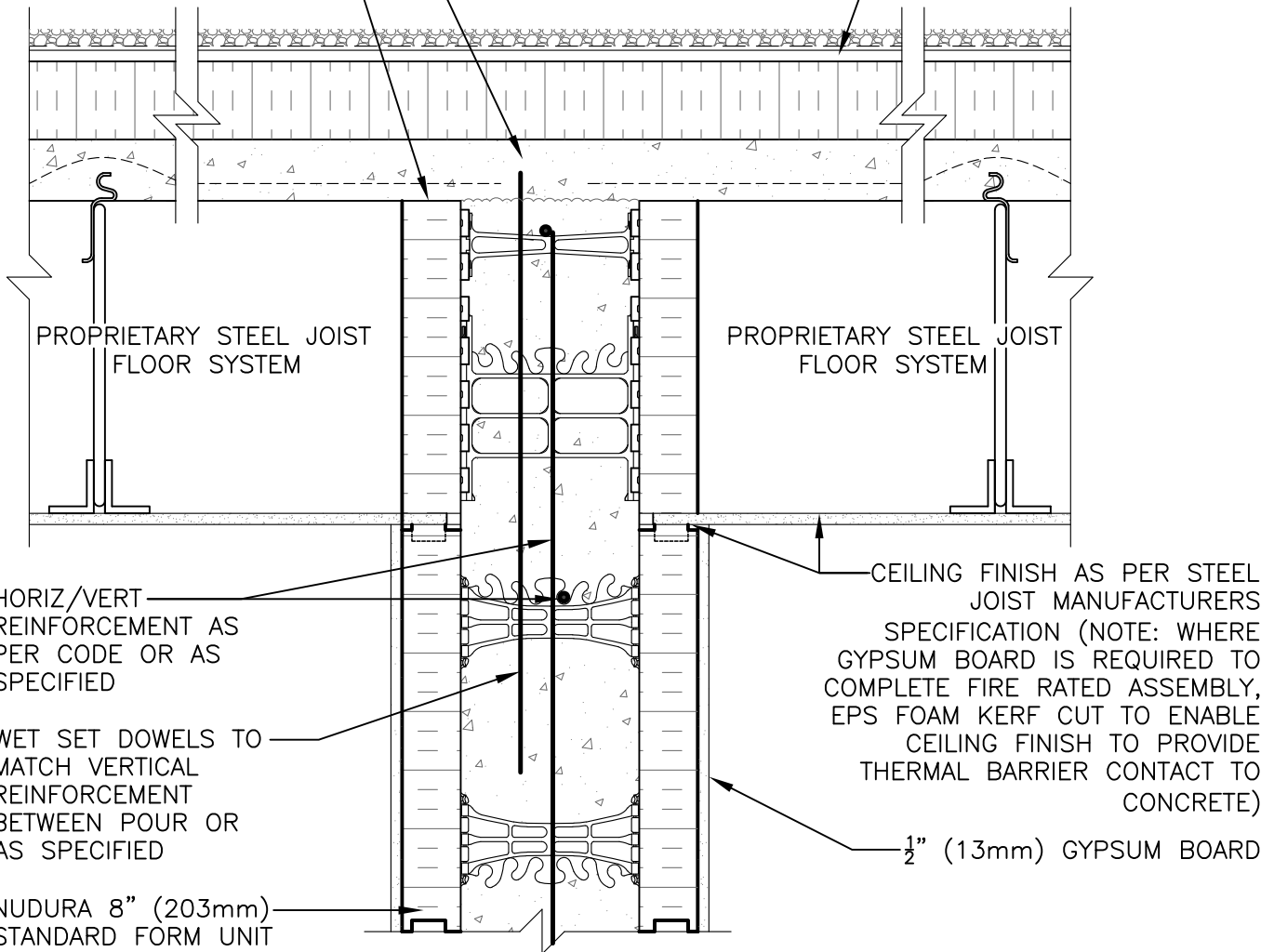


ALLOW ROOF SLAB
TO REST ON TO
BEARING WALL
CONCRETE

FORM PANELS c/w
INSERT WEBS- CUT TO
SUIT ROOF
CONNECTION-
ADDITIONAL FORM
SUPPORT AS REQUIRED

FIBER BOARD SUBSTRATE
w/ ROOF MEMBRANE
ON 3 1/2" (89mm) RIGID
INSULATION



PROPRIETARY STEEL JOIST
FLOOR SYSTEM

PROPRIETARY STEEL JOIST
FLOOR SYSTEM

HORIZ/VERT
REINFORCEMENT AS
PER CODE OR AS
SPECIFIED

WET SET DOWELS TO
MATCH VERTICAL
REINFORCEMENT
BETWEEN POUR OR
AS SPECIFIED

NUDURA 8" (203mm)
STANDARD FORM UNIT

CEILING FINISH AS PER STEEL
JOIST MANUFACTURERS
SPECIFICATION (NOTE: WHERE
GYPSUM BOARD IS REQUIRED TO
COMPLETE FIRE RATED ASSEMBLY,
EPS FOAM KERF CUT TO ENABLE
CEILING FINISH TO PROVIDE
THERMAL BARRIER CONTACT TO
CONCRETE)

1/2" (13mm) GYPSUM BOARD

DISCLAIMER NOTICE:
SPECIFIC INFORMATION
REQUIRED FOR COMPLIANCE
WITH LOCAL CODES IS THE
RESPONSIBILITY OF THE
DESIGNER



NUDURA

INTEGRATED BUILDING TECHNOLOGY

Building Value.

NUDURA 8" (203mm) FORM UNIT
STEEL JOIST ROOF SYSTEM
NON-BEARING DEMISING WALL

REV. NO.
000

DATE:
APRIL 2010

DRAWN BY:
K. STILL

DWG NO.

G8B04

SCALE:

1 : 8