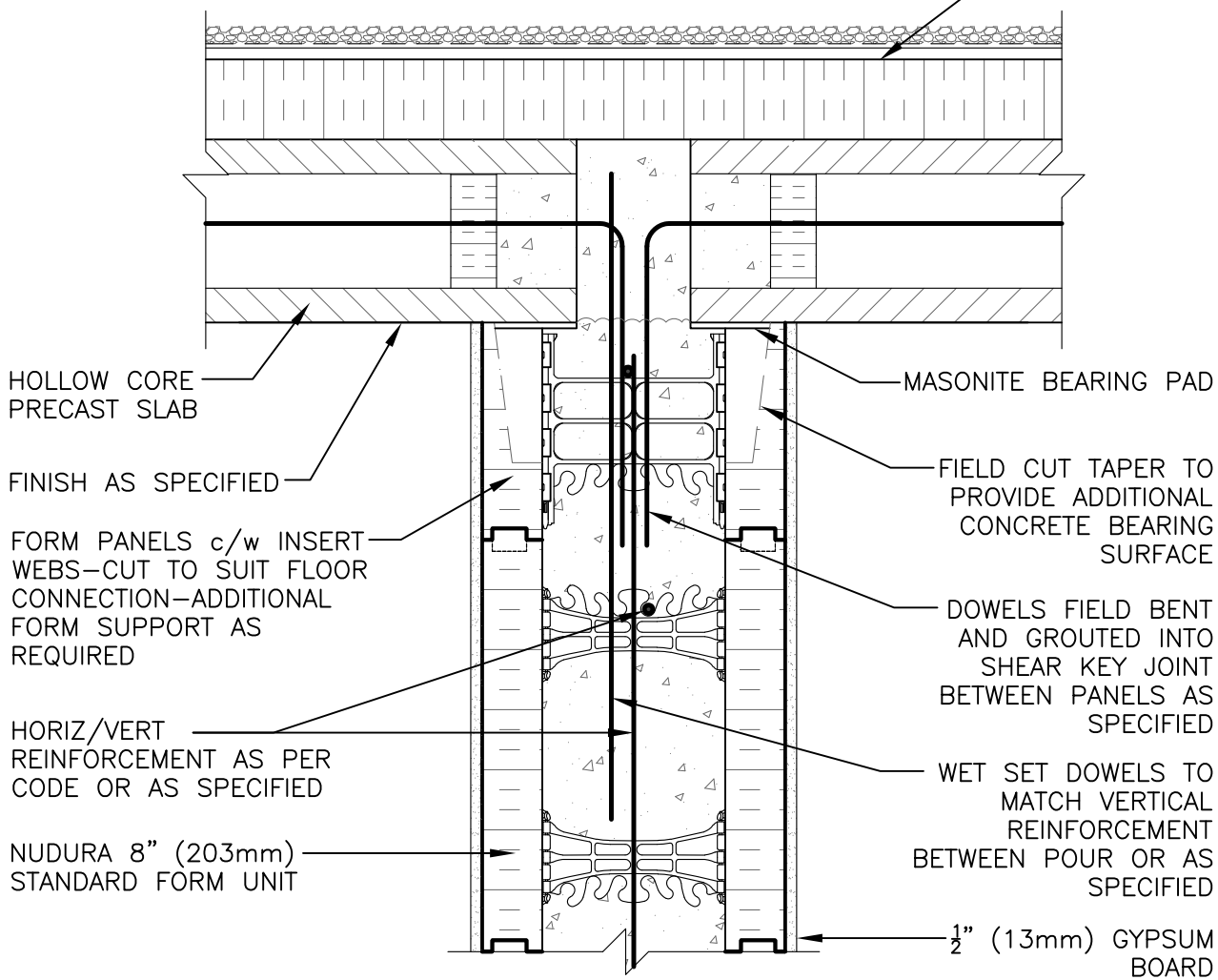


FIBER BOARD SUBSTRATE  
w/ ROOF MEMBRANE  
ON 3 1/2" (89mm) RIGID  
INSULATION



HOLLOW CORE  
PRECAST SLAB

FINISH AS SPECIFIED

FORM PANELS c/w INSERT  
WEBS—CUT TO SUIT FLOOR  
CONNECTION—ADDITIONAL  
FORM SUPPORT AS  
REQUIRED

HORIZ/VERT  
REINFORCEMENT AS PER  
CODE OR AS SPECIFIED

NUDURA 8" (203mm)  
STANDARD FORM UNIT

MASONITE BEARING PAD

FIELD CUT TAPER TO  
PROVIDE ADDITIONAL  
CONCRETE BEARING  
SURFACE

DOWELS FIELD BENT  
AND GROUTED INTO  
SHEAR KEY JOINT  
BETWEEN PANELS AS  
SPECIFIED

WET SET DOWELS TO  
MATCH VERTICAL  
REINFORCEMENT  
BETWEEN POUR OR AS  
SPECIFIED

1/2" (13mm) GYPSUM  
BOARD

**DISCLAIMER NOTICE:**  
SPECIFIC INFORMATION  
REQUIRED FOR COMPLIANCE  
WITH LOCAL CODES IS THE  
RESPONSIBILITY OF THE  
DESIGNER



NUDURA 8" (203mm) FORM UNIT  
HOLLOW CORE PRECAST ROOF  
BEARING DEMISING WALL

REV. NO. 000	DWG NO. G8A03
DATE: APRIL 2010	
DRAWN BY: K. STILL	SCALE: 1 : 8