

WET SET DOWELS TO MATCH VERTICAL REINFORCEMENT BETWEEN POUR OR AS SPECIFIED

1/2" (13mm) GYPSUM BOARD

FINISHED CONCRETE TOPPING

HOLLOW CORE PRECAST SLAB

HOLLOW CORE PRECAST SLAB

FINISH AS SPECIFIED

FINISH AS SPECIFIED

FORM PANELS c/w INSERT WEBS-CUT TO SUIT FLOOR CONNECTION-ADDITIONAL FORM SUPPORT AS REQUIRED

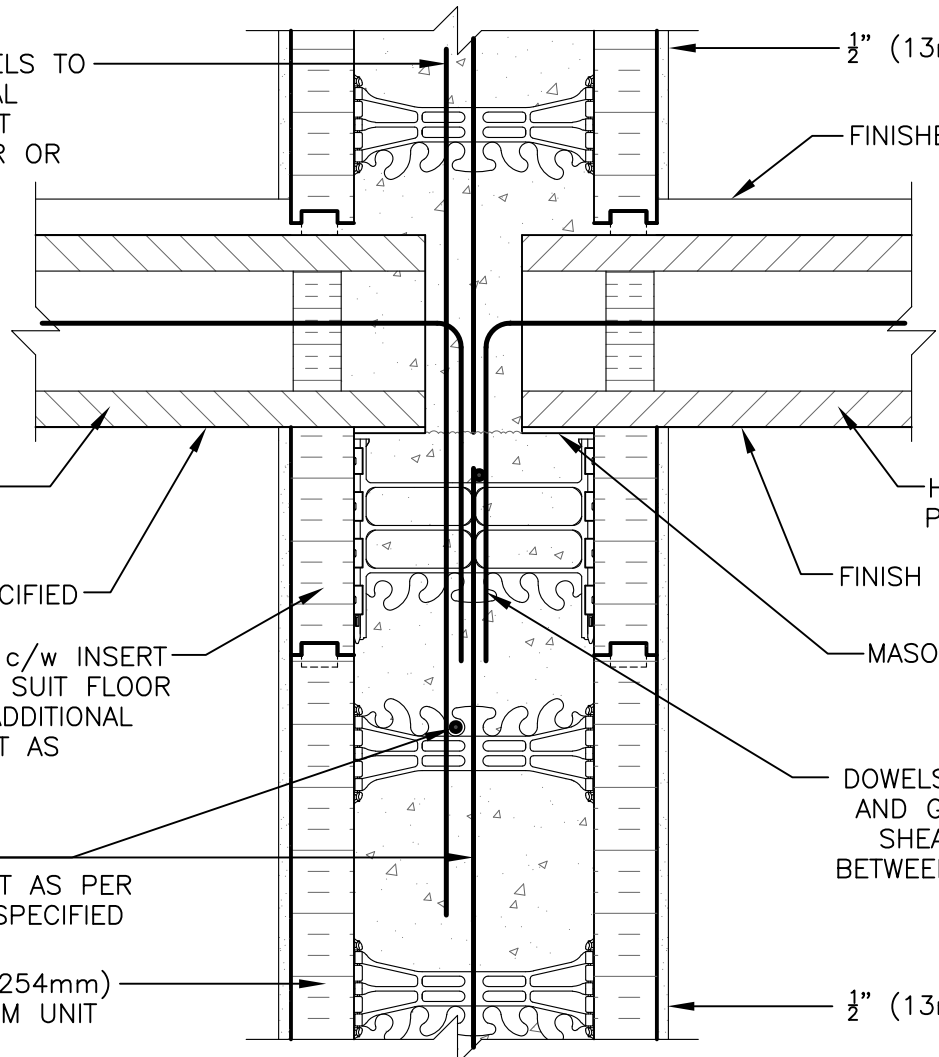
MASONITE BEARING PAD

HORIZ/VERT REINFORCEMENT AS PER CODE OR AS SPECIFIED

DOWELS FIELD BENT AND GROUTED INTO SHEAR KEY JOINT BETWEEN PANELS AS SPECIFIED

NUDURA 10" (254mm) STANDARD FORM UNIT

1/2" (13mm) GYPSUM BOARD



**DISCLAIMER NOTICE:**  
 SPECIFIC INFORMATION  
 REQUIRED FOR COMPLIANCE  
 WITH LOCAL CODES IS THE  
 RESPONSIBILITY OF THE  
 DESIGNER



NUDURA 10" FORM UNIT  
 HOLLOW CORE PRECAST SLAB  
 BEARING DEMISING WALL

REV. NO. 000	DWG NO. G10A01
REV. DATE: APRIL 2010	
DRAWN BY: K. STILL	SCALE: 1 : 8