

NUDURA 'EZ' BUCK w/
DIMENSIONAL LUMBER AS SHOWN

ALTERNATIVE BUCK METHODS
APPLIED:

WOOD,VINYL,STEEL,ETC. BUCK
MATERIAL FASTENED TO
CONCRETE w/EMBEDDED SPIRAL
NAILS,BOLTS,SCREWS IN
STAGGERED PATTERN, OR AS PER
MANUFACTURERS SPECIFICATION

1/2" (13mm) GYPSUM
BOARD

NUDURA 8" (203mm)
STANDARD FORM UNIT

HORIZ/VERT
REINFORCEMENT AS PER
CODE OR AS SPECIFIED

BRICK VENEER c/w 1"
(25mm) AIR SPACE AND
BRICK TIES

OPENING REINFORCEMENT AS
PER CODE OR AS SPECIFIED

BRICK RETURN TO COVER AIR
SPACE

VAPOUR BARRIER
SEALED TO FRAME

GYPSUM BOARD
RETURN TO FRAME

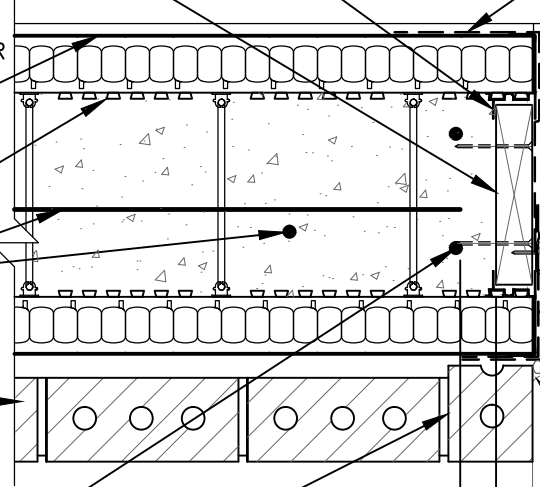
NUDURA WATERPROOF
MEMBRANE LAPPING VAPOUR
BARRIER TO COMPLETE AIR
SEAL

FRAME ANCHOR CLIPS
SECURED TO BUCK AND
FRAME AS SPECIFIED

ALUMINUM WINDOW
FRAME

CONTINUOUS CAULKING
AROUND FRAME AT CONTACT
TO MASONRY

1 1/2" (38mm)
MIN. COVER



DISCLAIMER NOTICE:
SPECIFIC INFORMATION
REQUIRED FOR COMPLIANCE
WITH LOCAL CODES IS THE
RESPONSIBILITY OF THE
DESIGNER

THIS DETAIL IS SUITABLE FOR NON-COMBUSTIBLE 1 TO 3 STOREY HIGH APPLICATIONS AS PERMITTED UNDER LOCAL CODES; FOR WINDOWS IN BRICK CLAD MULTI-STOREY APPLICATIONS, REFER TO DETAIL E8D06 UNDER THIS SECTION



NUDURA

INTEGRATED BUILDING TECHNOLOGY

Building Value.

NUDURA 8" (203mm) FORM UNIT
WINDOW JAMB DETAIL
BRICK VENEER FINISH
ALUMINUM FRAMED WINDOW
WOOD ROUGH BUCK

REV. NO.
003 KS
REV. DATE:
MAY 2010
DATE:
T. VAN CLIEAF

DWG NO.
E8D04
SCALE:
1 : 8