

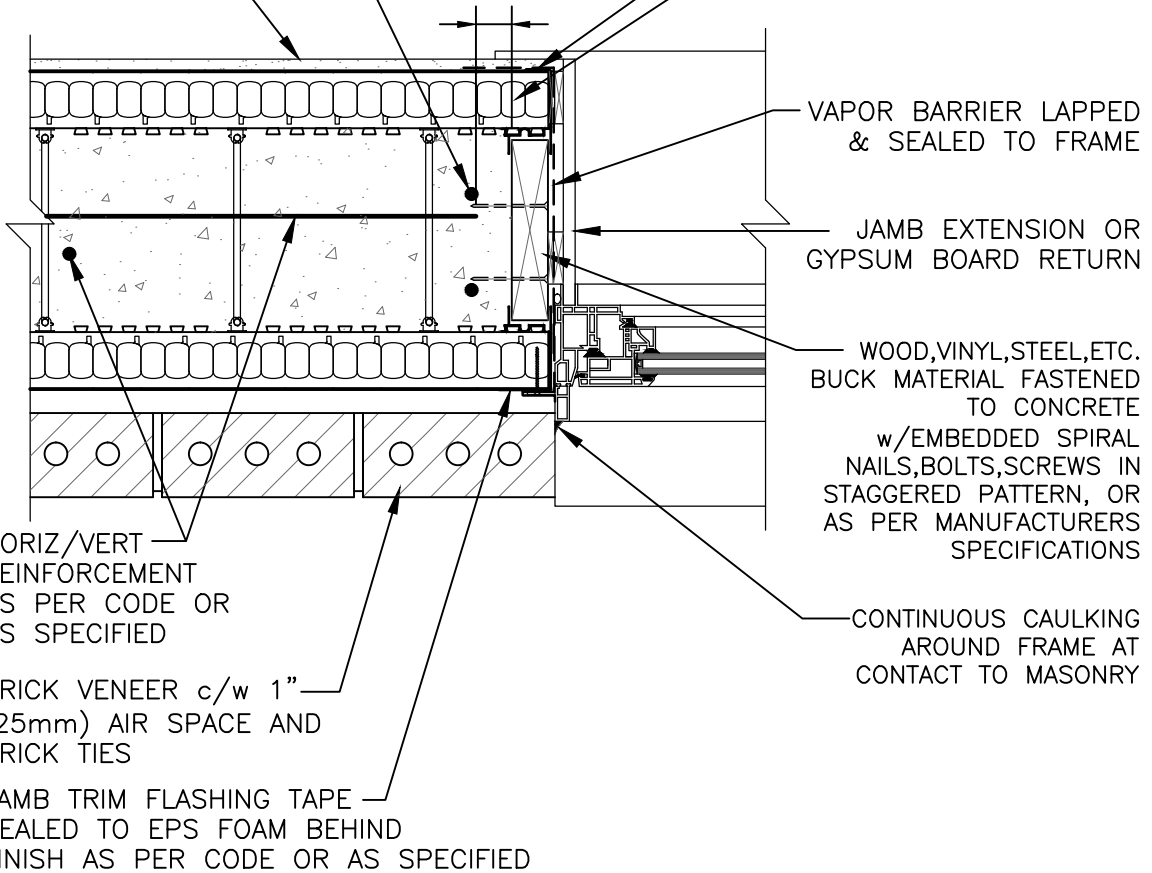
OPENING REINFORCEMENT
AS PER CODE OR AS
SPECIFIED

1/2" (13mm)
GYPSUM BOARD

1 1/2" (38mm)
MIN. COVER

NUDURA EZ BUCK

NUDURA 8" (203mm)
STANDARD FORM UNIT



VAPOR BARRIER LAPPED
& SEALED TO FRAME

JAMB EXTENSION OR
GYPSUM BOARD RETURN

WOOD, VINYL, STEEL, ETC.
BUCK MATERIAL FASTENED
TO CONCRETE
w/ EMBEDDED SPIRAL
NAILS, BOLTS, SCREWS IN
STAGGERED PATTERN, OR
AS PER MANUFACTURERS
SPECIFICATIONS

CONTINUOUS CAULKING
AROUND FRAME AT
CONTACT TO MASONRY

HORIZ/VERT
REINFORCEMENT
AS PER CODE OR
AS SPECIFIED

BRICK VENEER c/w 1"
(25mm) AIR SPACE AND
BRICK TIES

JAMB TRIM FLASHING TAPE
SEALED TO EPS FOAM BEHIND
FINISH AS PER CODE OR AS SPECIFIED

DISCLAIMER NOTICE:
SPECIFIC INFORMATION
REQUIRED FOR COMPLIANCE
WITH LOCAL CODES IS THE
RESPONSIBILITY OF THE
DESIGNER



NUDURA

INTEGRATED BUILDING TECHNOLOGY

Building Value.

NUDURA 8" (203mm) FORM UNIT
WINDOW JAMB DETAIL
WOOD ROUGH BUCK
BRICK VENEER FINISH

REV. NO.
000

DATE:
SEPT 2010

DRAWN BY:
K. STILL

DWG NO.

E8A02

SCALE:
1 : 8