

NUDURA 6" (152mm)
STANDARD FORM UNIT

DECORATIVE EPS FOAM
TRIM (HEAD AND SILL)
APPLIED TO NUDURA
FORM USING EPS
COMPATIBLE ADHESIVE

FASTEN STUCCO MESH TO
BUCK PRIOR TO PLACING
BUCK AT HEAD CONDITION

WINDOW FRAMING BY
OTHERS

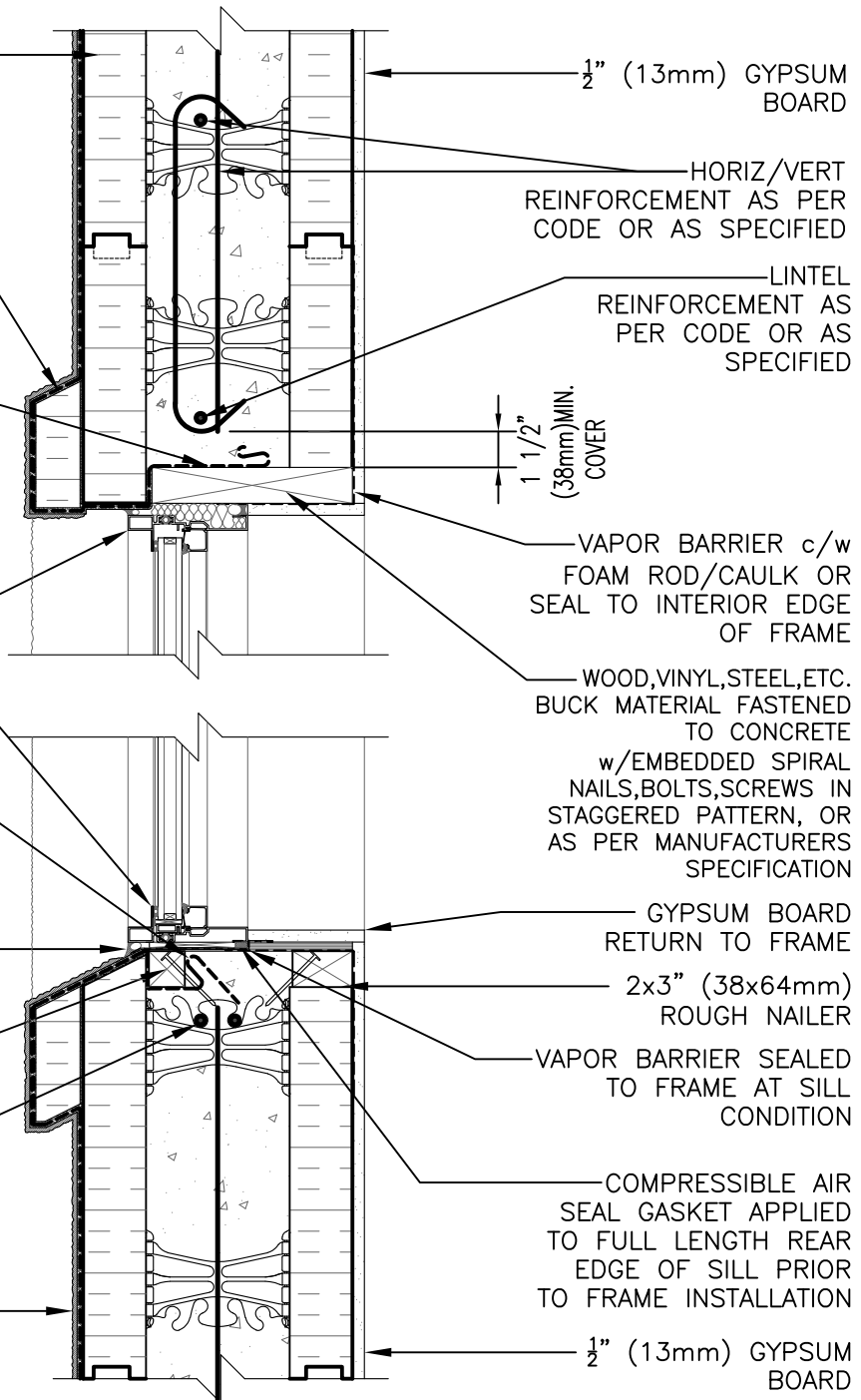
FOR MULTI-STOREY
APPLICATIONS, EIFS
LAMINA TO LAP BACK
AROUND BUCK TO
LINK w/ CONCRETE

FOAM BACKER ROD
AND CONTINUOUS
CAULKING AROUND
FRAME

2x2" (38x38mm)
ROUGH NAILER

OPENING
REINFORCEMENT AS PER
CODE OR AS SPECIFIED

DIRECT APPLIED
ACRYLIC FINISH



1/2" (13mm) GYPSUM
BOARD

HORIZ/VERT
REINFORCEMENT AS PER
CODE OR AS SPECIFIED

LINTEL
REINFORCEMENT AS
PER CODE OR AS
SPECIFIED

1 1/2"
(38mm) MIN.
COVER

VAPOR BARRIER c/w
FOAM ROD/CAULK OR
SEAL TO INTERIOR EDGE
OF FRAME

WOOD, VINYL, STEEL, ETC.
BUCK MATERIAL FASTENED
TO CONCRETE
w/ EMBEDDED SPIRAL
NAILS, BOLTS, SCREWS IN
STAGGERED PATTERN, OR
AS PER MANUFACTURERS
SPECIFICATION

GYPSUM BOARD
RETURN TO FRAME

2x3" (38x64mm)
ROUGH NAILER

VAPOR BARRIER SEALED
TO FRAME AT SILL
CONDITION

COMPRESSIBLE AIR
SEAL GASKET APPLIED
TO FULL LENGTH REAR
EDGE OF SILL PRIOR
TO FRAME INSTALLATION

1/2" (13mm) GYPSUM
BOARD

DISCLAIMER NOTICE:
SPECIFIC INFORMATION
REQUIRED FOR COMPLIANCE
WITH LOCAL CODES IS THE
RESPONSIBILITY OF THE
DESIGNER



NUDURA

INTEGRATED BUILDING TECHNOLOGY

Building Value.

NUDURA 6" (152mm) FORM UNIT
WINDOW HEAD/SILL DETAIL
DIRECT APPLIED ACRYLIC FINISH
ALUMINUM FRAMED WINDOW
WOOD ROUGH BUCK

REV. NO.
000

REV. DATE:
SEPT 2010

DRAWN BY:
K. STILL

DWG NO.

E6D05

SCALE:

1 : 8