

NUDURA 'EZ' BUCK w/
DIMENSIONAL LUMBER AS SHOWN

ALTERNATIVE BUCK METHODS
APPLIED:

WOOD,VINYL,STEEL,ETC. BUCK
MATERIAL FASTENED TO
CONCRETE w/EMBEDDED SPIRAL
NAILS,BOLTS,SCREWS IN
STAGGERED PATTERN, OR AS PER
MANUFACTURERS SPECIFICATION

1/2" (13mm) GYPSUM
BOARD

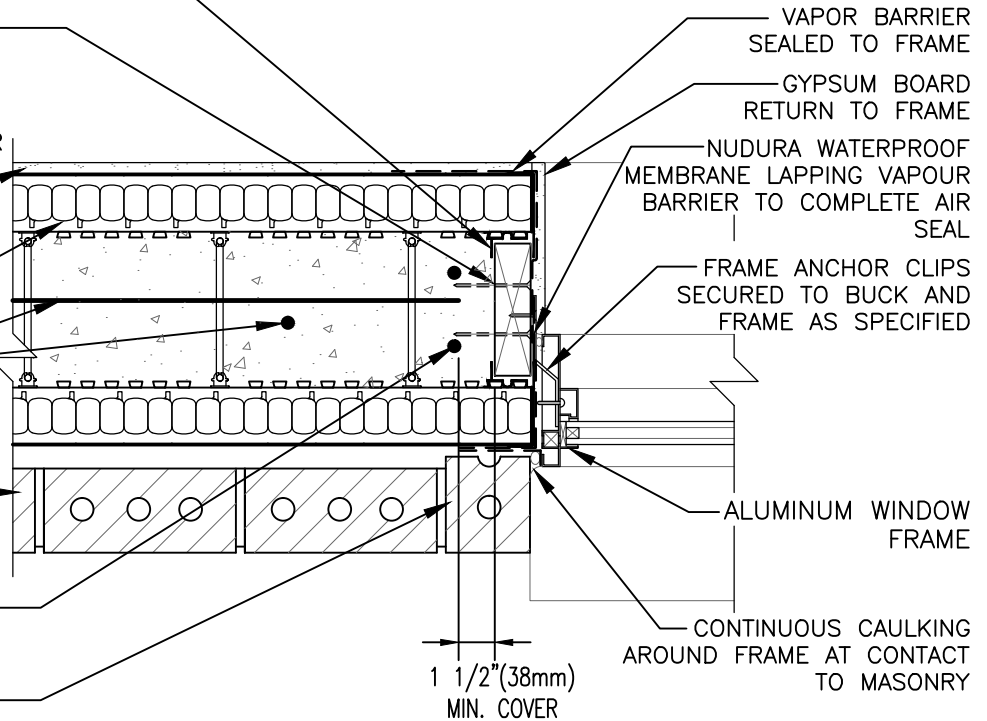
NUDURA 6" (152mm)
STANDARD FORM UNIT

HORIZ/VERT
REINFORCEMENT AS PER
CODE OR AS SPECIFIED

BRICK VENEER c/w 1"
(25mm) AIR SPACE AND
BRICK TIES

OPENING REINFORCEMENT AS
PER CODE OR AS SPECIFIED

BRICK RETURN TO COVER AIR
SPACE



DISCLAIMER NOTICE:
SPECIFIC INFORMATION
REQUIRED FOR COMPLIANCE
WITH LOCAL CODES IS THE
RESPONSIBILITY OF THE
DESIGNER

THIS DETAIL IS SUITABLE FOR NON-COMBUSTIBLE 1 TO 3 STOREY HIGH APPLICATIONS AS PERMITTED UNDER LOCAL CODES; FOR WINDOWS IN BRICK CLAD MULTI-STOREY APPLICATIONS, REFER TO DETAIL E6D11 UNDER THIS SECTION



NUDURA

INTEGRATED BUILDING TECHNOLOGY

Building Value.

NUDURA 6" (152mm) FORM UNIT
WINDOW JAMB DETAIL
BRICK VENEER FINISH
ALUMINUM FRAMED WINDOW
WOOD ROUGH BUCK

REV. NO. 004 KS	DWG NO. E6D02
REV. DATE: MAY 2010	
DRAWN BY: J. NEILON	SCALE: 1 : 8