

NUDURA 6" (152mm)
STANDARD FORM UNIT

HORIZ/VERT
REINFORCEMENT AS PER
CODE OR AS SPECIFIED

ADDITIONAL BRACING
REQUIRED DURING
FLOOR SLAB POUR

WET SET DOWELS
FIELD BENT INTO SLAB
AS SPECIFIED

WET SET DOWELS TO
MATCH VERTICAL
REINFORCEMENT BETWEEN
POUR OR AS SPECIFIED

BRICK VENEER c/w 1"
(25mm) AIR SPACE
AND BRICK TIES

1/2" (13mm) GYPSUM
BOARD

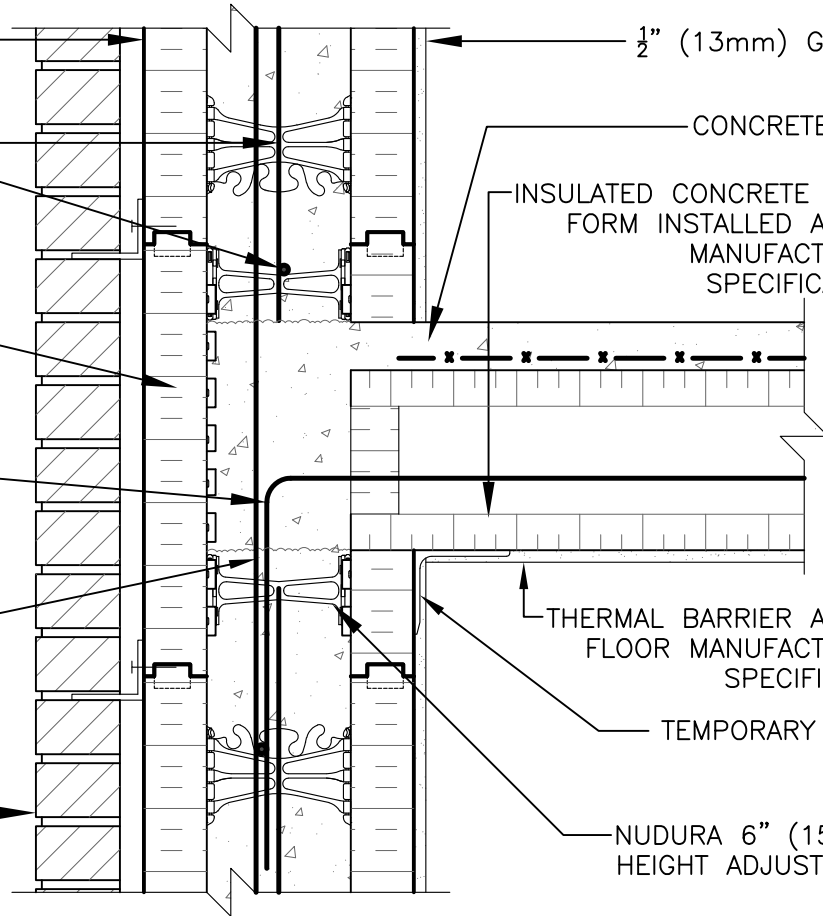
CONCRETE SLAB

INSULATED CONCRETE FLOOR
FORM INSTALLED AS PER
MANUFACTURERS
SPECIFICATIONS

THERMAL BARRIER AS PER
FLOOR MANUFACTURERS
SPECIFICATION

TEMPORARY STEEL
ANGLE

NUDURA 6" (152mm)
HEIGHT ADJUSTER TIE



DISCLAIMER NOTICE:
SPECIFIC INFORMATION
REQUIRED FOR COMPLIANCE
WITH LOCAL CODES IS THE
RESPONSIBILITY OF THE
DESIGNER



NUDURA

INTEGRATED BUILDING TECHNOLOGY

Building Value.

NUDURA 6" (152mm) FORM UNIT
ICFS CONNECTION
ICFS RESTING ON FORM
EXTERIOR BEARING WALL
BRICK VENEER FINISH

REV. NO.
005 KS

DATE:
APRIL 2010

DRAWN BY:
T. VAN CLIEAF

DWG NO.

D6D06

SCALE:
1 : 8