

NUDURA 6" (152mm)
STANDARD FORM UNIT

EXTERIOR FINISH AS
SPECIFIED

WET SET DOWELS TO MATCH
VERTICAL REINFORCEMENT
BETWEEN POURS OR AS
SPECIFIED

V-CLIP WALL PANEL ANCHOR

FORM PANELS c/w INSERT
WEBS-CUT TO SUIT FLOOR
CONNECTION-ADDITIONAL FORM
SUPPORT AS REQUIRED

$\frac{3}{16}$ " (5mm) ACRYLIC PARGE
COAT

NUDURA WATERPROOF MEMBRANE

$\frac{1}{2}$ " (13mm) GYPSUM
BOARD

HORIZ/VERT
REINFORCEMENT AS
PER CODE OR AS
SPECIFIED

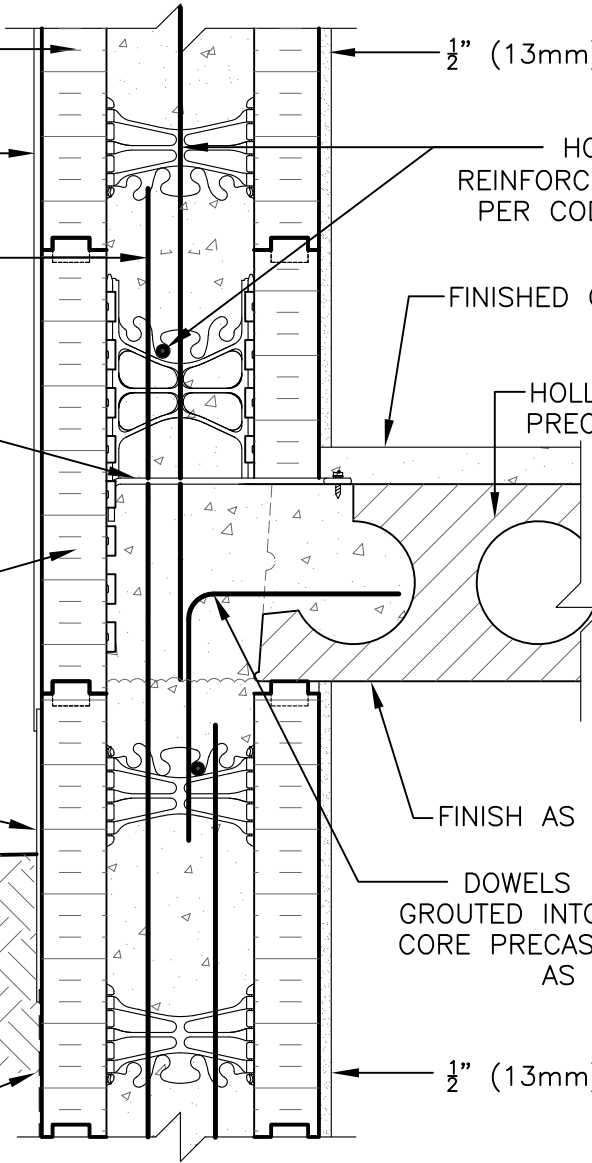
FINISHED CONCRETE
TOPPING

HOLLOW CORE
PRECAST SLAB

FINISH AS SPECIFIED

DOWELS BENT AND
GROUTED INTO HOLLOW
CORE PRECAST PANELS
AS SPECIFIED

$\frac{1}{2}$ " (13mm) GYPSUM
BOARD



DISCLAIMER NOTICE:
SPECIFIC INFORMATION
REQUIRED FOR COMPLIANCE
WITH LOCAL CODES IS THE
RESPONSIBILITY OF THE
DESIGNER



NUDURA

INTEGRATED BUILDING TECHNOLOGY

Building Value.

NUDURA 6" (152mm) FORM UNIT
HOLLOW CORE PRECAST SLAB
EXTERIOR SIDE WALL DETAIL
EXTERIOR FINISH AS SPECIFIED

REV. NO.
006 KS
REV. DATE:
FEB 2010
DRAWN BY:
J. NEILON

DWG NO.
D6A02
SCALE:
1 : 8