

NUDURA 12" (305mm)
STANDARD FORM UNIT

EXTERIOR FINISH AS
SPECIFIED

WET SET DOWELS TO
MATCH VERTICAL
REINFORCEMENT
BETWEEN POUR OR
AS SPECIFIED

FORM PANELS c/w
INSERT WEBS—CUT TO
SUIT FLOOR
CONNECTION—ADDITIONAL
FORM SUPPORT AS
REQUIRED

HORIZ/VERT
REINFORCEMENT AS
PER CODE OR AS
SPECIFIED

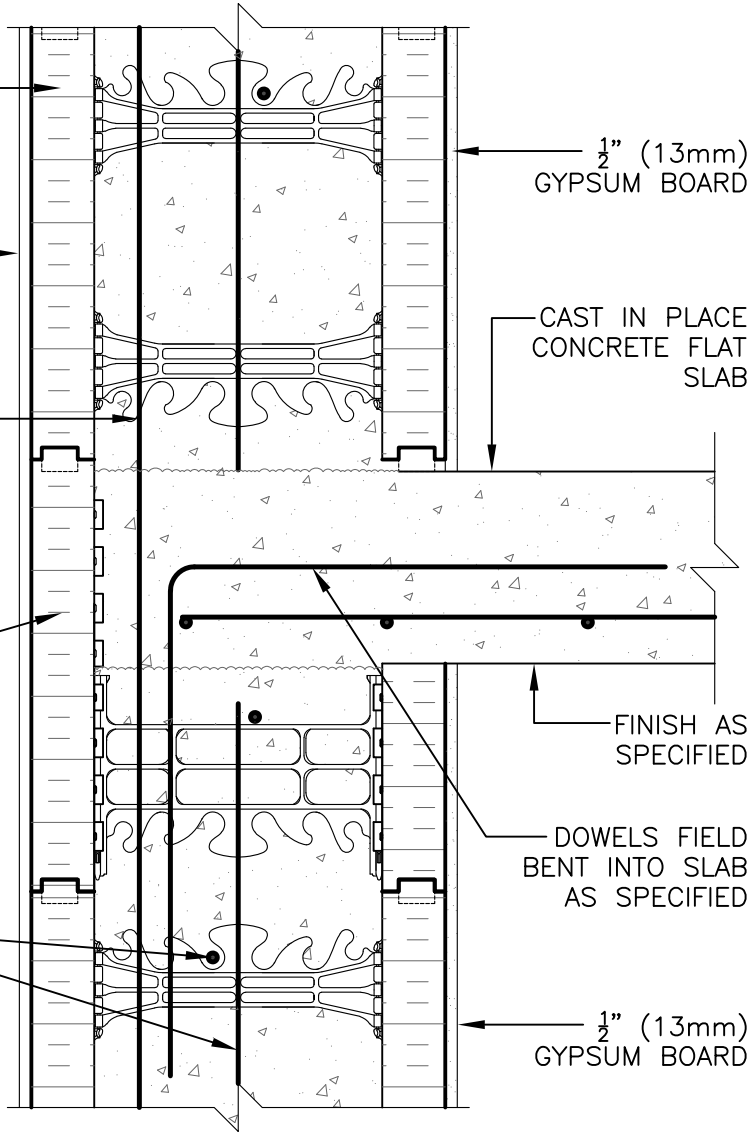
$\frac{1}{2}$ " (13mm)
GYPSUM BOARD

CAST IN PLACE
CONCRETE FLAT
SLAB

FINISH AS
SPECIFIED

DOWELS FIELD
BENT INTO SLAB
AS SPECIFIED

$\frac{1}{2}$ " (13mm)
GYPSUM BOARD



DISCLAIMER NOTICE:
SPECIFIC INFORMATION
REQUIRED FOR COMPLIANCE
WITH LOCAL CODES IS THE
RESPONSIBILITY OF THE
DESIGNER



NUDURA

INTEGRATED BUILDING TECHNOLOGY

Building Value.

NUDURA 12" (305mm) FORM UNIT
CONCRETE FLAT PLATE
INTERMEDIATE FLOOR CONNECTION
EXTERIOR BEARING WALL DETAIL
EXTERIOR FINISH SPECIFIED

REV. NO.
000

DATE:
APRIL 2010

DRAWN BY:
K. STILL

DWG NO.

D12E04

SCALE:

1 : 8