

NUDURA 12" (305mm)
STANDARD FORM UNIT

EXTERIOR FINISH AS
SPECIFIED

HORIZ/VERT
REINFORCEMENT AS PER
CODE OR AS SPECIFIED

ADDITIONAL BRACING
REQUIRED DURING
FLOOR SLAB POUR

WET SET DOWELS TO
MATCH VERTICAL
REINFORCEMENT
BETWEEN POUR OR AS
SPECIFIED

WET SET DOWELS
FIELD BENT INTO
FLOOR AS SPECIFIED

1/2" (13mm) GYPSUM
BOARD

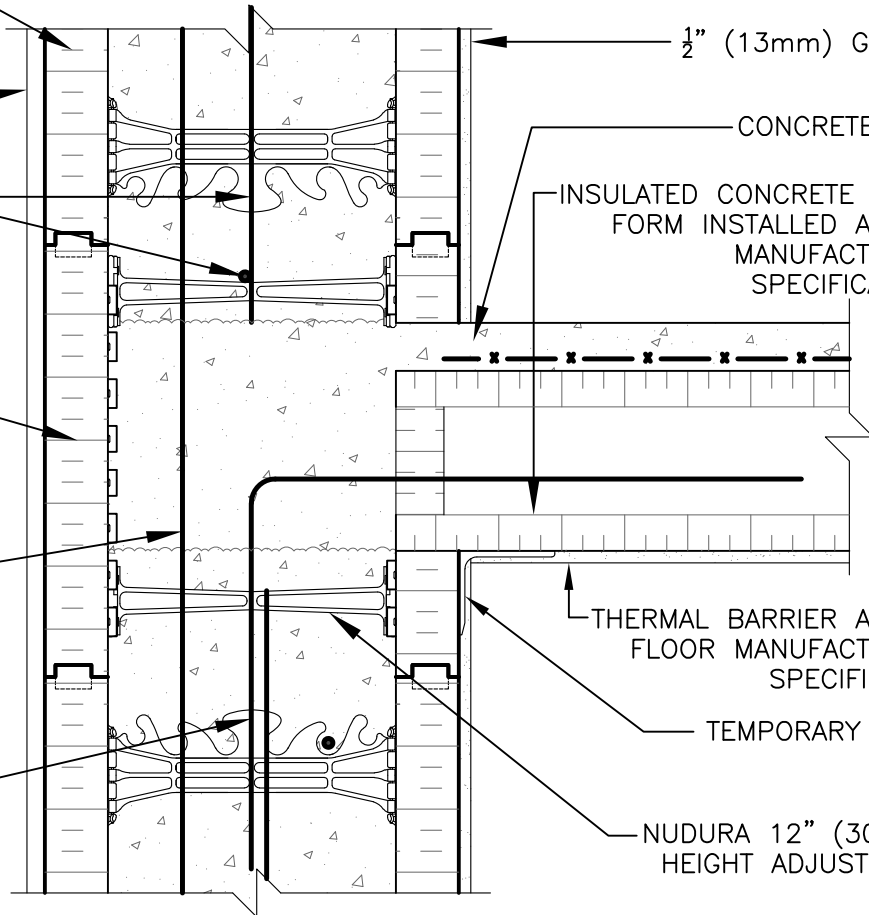
CONCRETE SLAB

INSULATED CONCRETE FLOOR
FORM INSTALLED AS PER
MANUFACTURERS
SPECIFICATIONS

THERMAL BARRIER AS PER
FLOOR MANUFACTURERS
SPECIFICATION

TEMPORARY STEEL
ANGLE

NUDURA 12" (305mm)
HEIGHT ADJUSTER TIE



DISCLAIMER NOTICE:
SPECIFIC INFORMATION
REQUIRED FOR COMPLIANCE
WITH LOCAL CODES IS THE
RESPONSIBILITY OF THE
DESIGNER



NUDURA

INTEGRATED BUILDING TECHNOLOGY

Building Value.

NUDURA 12" (305mm) FORM UNIT
ICFS CONNECTION
ICFS RESTING ON FORM
EXTERIOR SIDE WALL
EXTERIOR FINISH AS SPECIFIED

REV. NO.
003 KS
DATE:
APRIL 2010
DRAWN BY:
J. NEILON

DWG NO.
D12D02
SCALE:
1 : 8