

NUDURA 10" (254mm)  
STANDARD FORM UNIT

EXTERIOR FINISH AS  
SPECIFIED

WET SET DOWELS TO  
MATCH VERTICAL  
REINFORCEMENT  
BETWEEN POUR OR  
AS SPECIFIED

FORM PANELS c/w  
INSERT WEBS—CUT TO  
SUIT FLOOR  
CONNECTION—ADDITIONAL  
FORM SUPPORT AS  
REQUIRED

HORIZ/VERT  
REINFORCEMENT AS  
PER CODE OR AS  
SPECIFIED

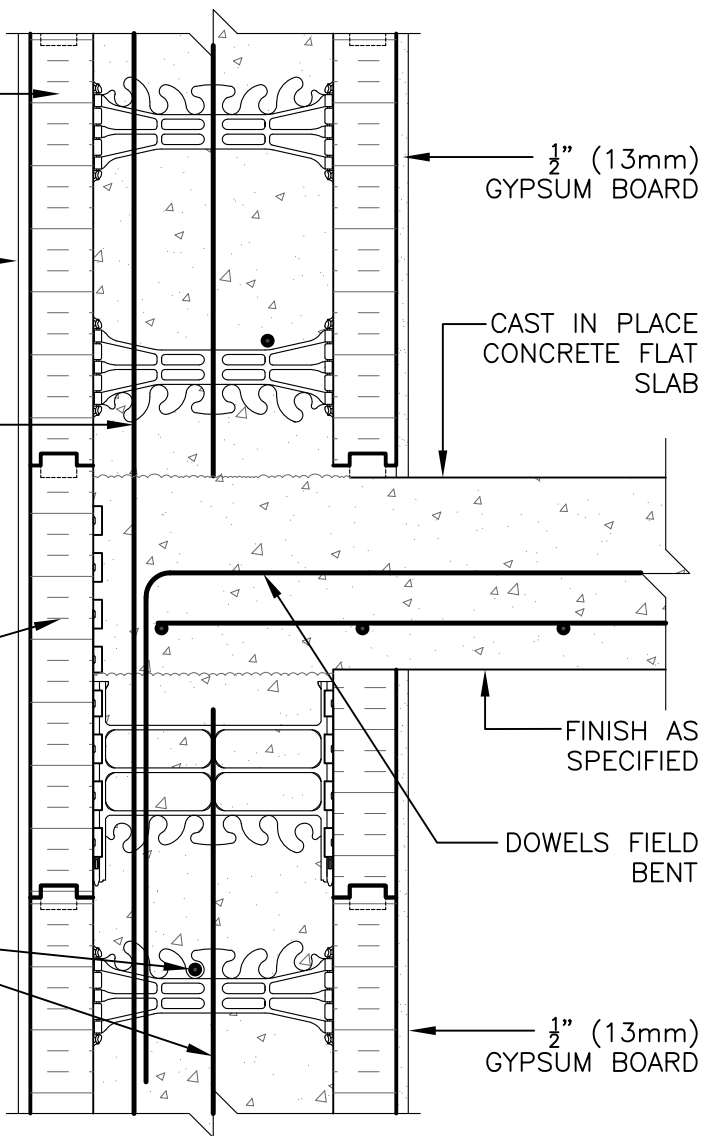
$\frac{1}{2}$ " (13mm)  
GYPSUM BOARD

CAST IN PLACE  
CONCRETE FLAT  
SLAB

FINISH AS  
SPECIFIED

DOWELS FIELD  
BENT

$\frac{1}{2}$ " (13mm)  
GYPSUM BOARD



**DISCLAIMER NOTICE:**  
SPECIFIC INFORMATION  
REQUIRED FOR COMPLIANCE  
WITH LOCAL CODES IS THE  
RESPONSIBILITY OF THE  
DESIGNER



**NUDURA**

INTEGRATED BUILDING TECHNOLOGY

*Building Value.*

NUDURA 10" (254mm) FORM UNIT  
CONCRETE FLAT PLATE  
INTERMEDIATE FLOOR CONNECTION  
EXTERIOR BEARING WALL DETAIL  
EXTERIOR FINISH SPECIFIED

REV. NO.  
000

DATE:  
APRIL 2010

DRAWN BY:  
K. STILL

DWG NO.

D10E04

SCALE:

1 : 8