

NUDURA 10" (254mm)  
STANDARD FORM UNIT

WET SET DOWELS TO  
MATCH VERTICAL  
REINFORCEMENT  
BETWEEN POUR OR  
AS SPECIFIED

V-CLIP WALL PANEL  
ANCHOR

EXTERIOR FINISH AS  
SPECIFIED

FORM PANELS c/w INSERT  
WEBS-CUT TO SUIT FLOOR  
CONNECTION-ADDITIONAL  
FORM SUPPORT AS  
REQUIRED

HORIZ/VERT  
REINFORCEMENT AS PER  
CODE OR AS SPECIFIED

1/2" (13mm) GYPSUM  
BOARD

FINISHED CONCRETE  
TOPPING

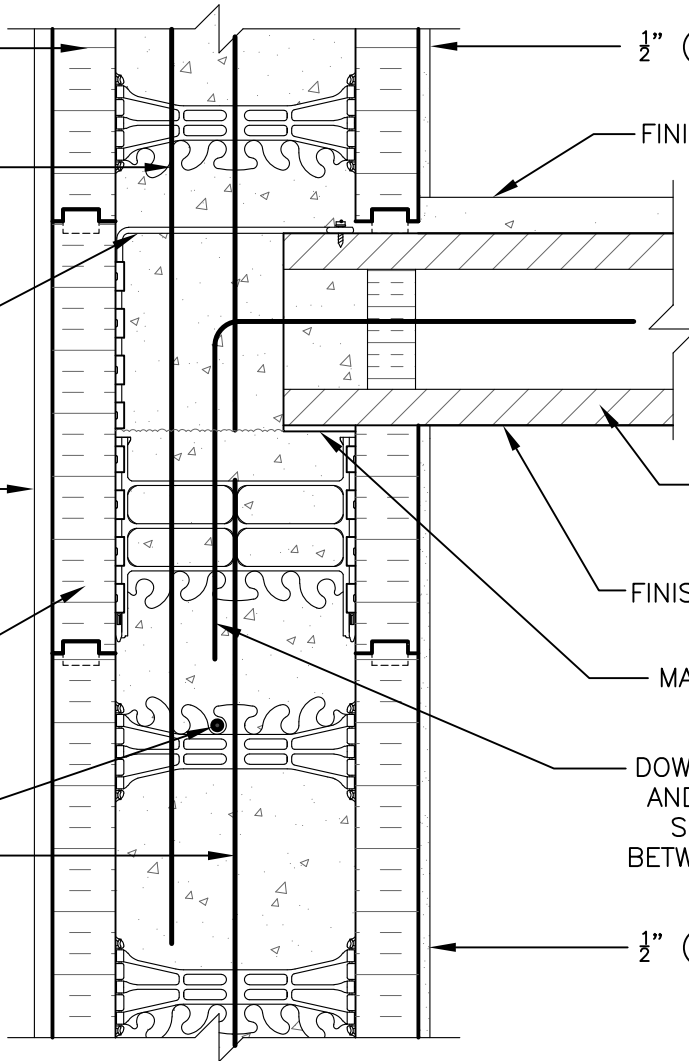
HOLLOW CORE  
PRECAST SLAB

FINISH AS SPECIFIED

MASONITE BEARING  
PAD

DOWELS FIELD BENT  
AND GROUTED INTO  
SHEAR KEY JOINT  
BETWEEN PANELS AS  
SPECIFIED

1/2" (13mm) GYPSUM  
BOARD



**DISCLAIMER NOTICE:**  
SPECIFIC INFORMATION  
REQUIRED FOR COMPLIANCE  
WITH LOCAL CODES IS THE  
RESPONSIBILITY OF THE  
DESIGNER



**NUDURA**

INTEGRATED BUILDING TECHNOLOGY

*Building Value.*

NUDURA 10" (254mm) FORM UNIT  
HOLLOW CORE PRECAST SLAB  
INTERMEDIATE FLOOR CONNECTION  
EXTERIOR BEARING WALL DETAIL  
EXTERIOR FINISH SPECIFIED

REV. NO.  
003 KS  
REV. DATE:  
FEB 2010  
DRAWN BY:  
T. VAN CLIEAF

DWG NO.  
D10A10  
SCALE:  
1 : 8