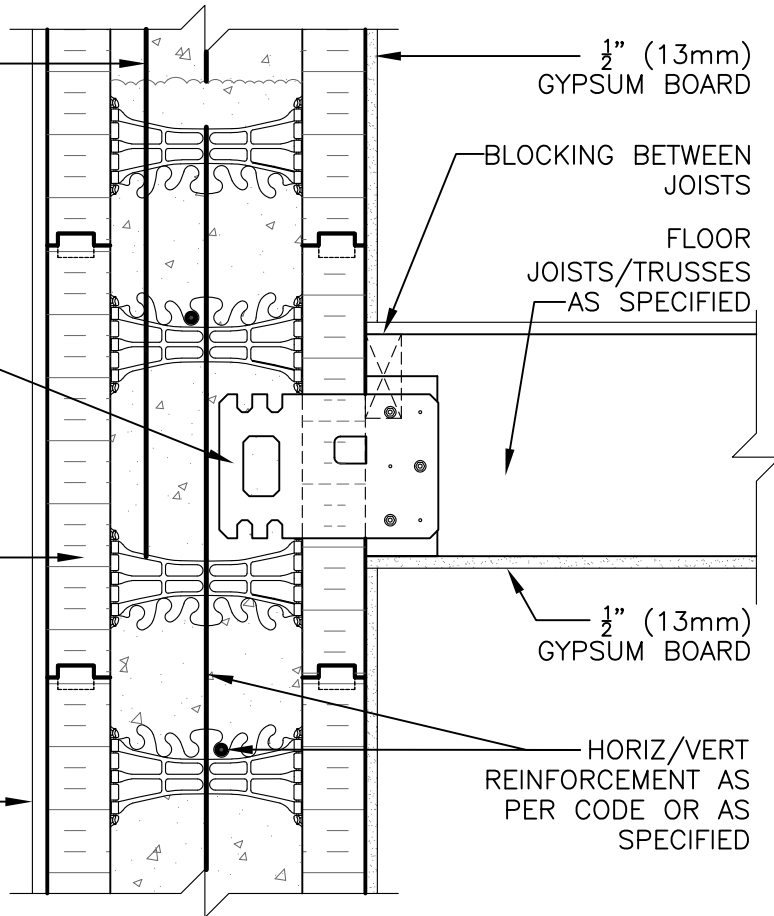


WET SET DOWELS TO  
MATCH VERTICAL  
REINFORCEMENT  
BETWEEN POUR OR AS  
SPECIFIED

PROPRIETARY EMBEDDED  
JOIST ANCHORAGE  
SYSTEM OR EQUIVALENT

NUDURA 8" (203mm)  
STANDARD FORM UNIT

EXTERIOR FINISH AS  
SPECIFIED



$\frac{1}{2}$ " (13mm)  
GYPSUM BOARD

BLOCKING BETWEEN  
JOISTS

FLOOR  
JOISTS/TRUSSES  
AS SPECIFIED

$\frac{1}{2}$ " (13mm)  
GYPSUM BOARD

HORIZ/VERT  
REINFORCEMENT AS  
PER CODE OR AS  
SPECIFIED

**DISCLAIMER NOTICE:**  
SPECIFIC INFORMATION  
REQUIRED FOR COMPLIANCE  
WITH LOCAL CODES IS THE  
RESPONSIBILITY OF THE  
DESIGNER



**NUDURA**

INTEGRATED BUILDING TECHNOLOGY

*Building Value.*

NUDURA 8" (203mm) FORM UNIT  
FLOOR JOIST CONNECTION  
MULTI-PURPOSE HANGER  
JOISTS PERPENDICULAR TO WALL

REV. NO.  
003 KS

REV. DATE:  
SEPT 2010

DRAWN BY:  
T. VAN CLIEAF

DWG NO.

C8A13

SCALE:  
1 : 8