

NUDURA STANDARD 8"  
(203mm) FORM UNIT

BRICK VENEER c/w  
1" (25mm) AIR SPACE  
AND BRICK TIES

HORIZ/VERT  
REINFORCEMENT AS PER  
CODE OR AS SPECIFIED

THROUGH WALL  
FLASHING AS PER  
CODE OR AS  
SPECIFIED

$\frac{3}{16}$ " (5mm) ACRYLIC  
PARGE COAT

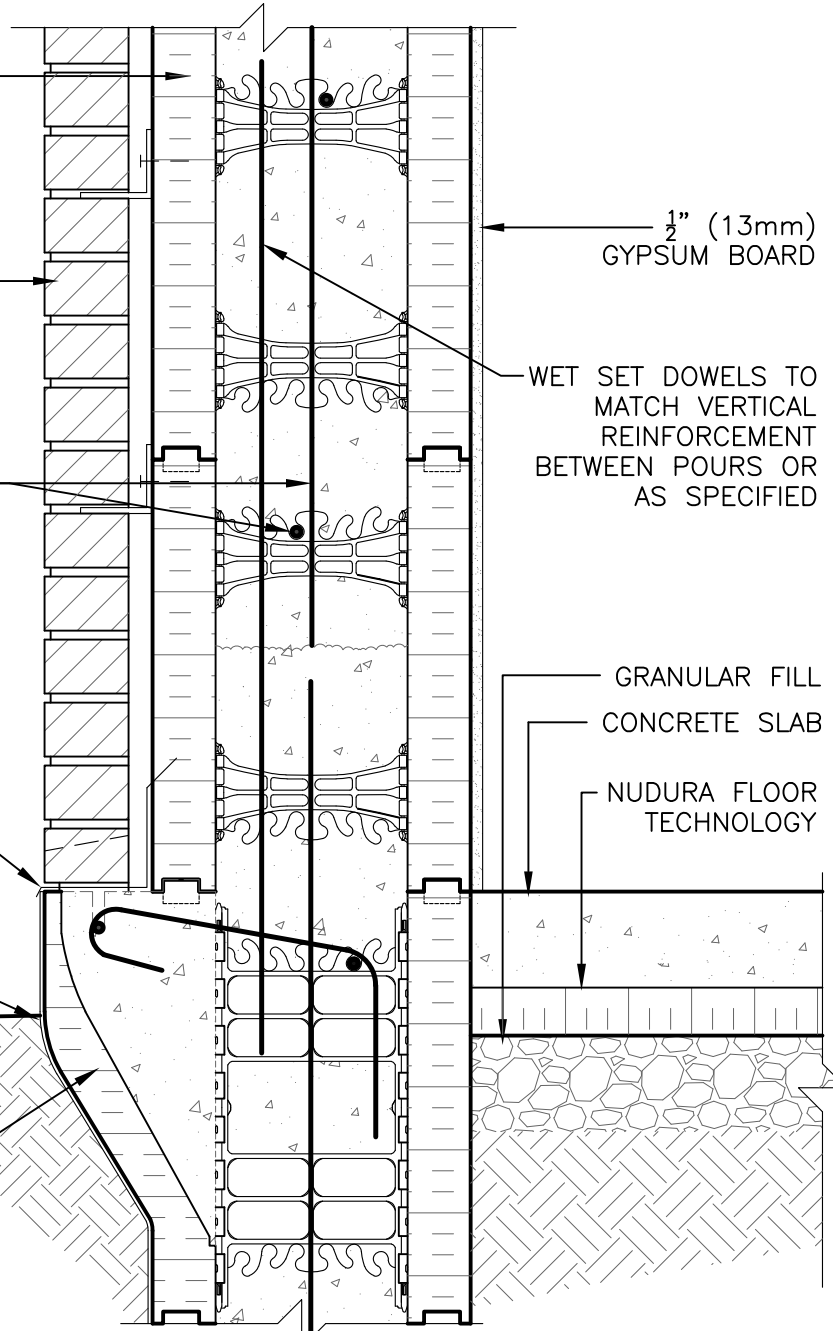
NUDURA 8" (203mm)  
BRICK LEDGE FORM  
UNIT

$\frac{1}{2}$ " (13mm)  
GYPSUM BOARD

WET SET DOWELS TO  
MATCH VERTICAL  
REINFORCEMENT  
BETWEEN POURS OR  
AS SPECIFIED

GRANULAR FILL  
CONCRETE SLAB

NUDURA FLOOR  
TECHNOLOGY



**DISCLAIMER NOTICE:**  
SPECIFIC INFORMATION  
REQUIRED FOR COMPLIANCE  
WITH LOCAL CODES IS THE  
RESPONSIBILITY OF THE  
DESIGNER



**NUDURA**

INTEGRATED BUILDING TECHNOLOGY

*Building Value.*

NUDURA 8" (203mm) FORM UNIT  
STEM WALL AT SLAB ON GRADE  
BRICK VENEER FINISH  
INSULATED

REV. NO.  
003 KS  
REV. DATE:  
FEB 2010  
DRAWN BY:  
T. VAN CLIEAF

DWG NO.  
B8C11  
SCALE:  
1 : 8