

NUDURA 6" (152mm)
STANDARD FORM UNIT

BRICK VENEER c/w
1" (25mm) AIR SPACE
AND BRICK TIES

HORIZ/VERT
REINFORCEMENT AS PER
CODE OR AS SPECIFIED

THROUGH WALL
FLASHING AS PER
CODE OR AS
SPECIFIED

$\frac{3}{16}$ " (5mm) ACRYLIC
PARGE COAT

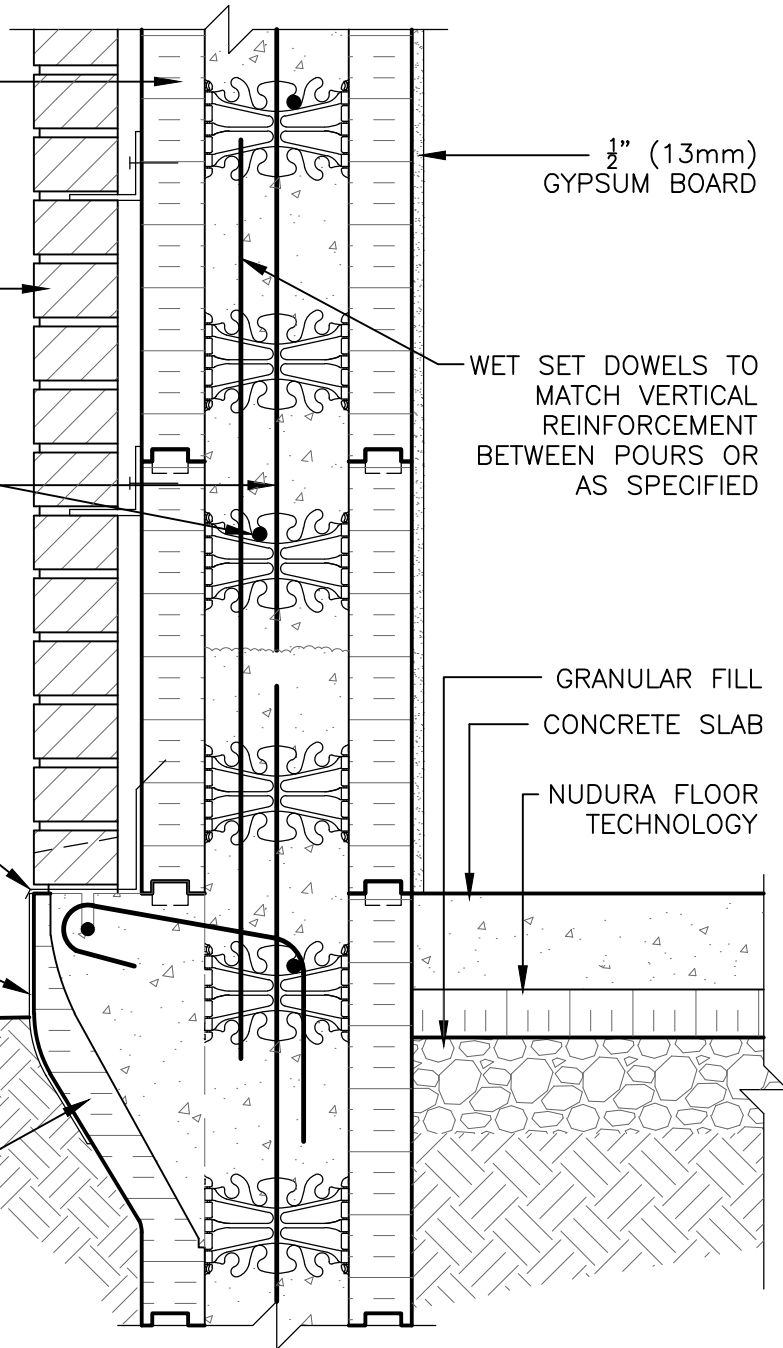
NUDURA 6" (152mm)
BRICK LEDGE FORM
UNIT

$\frac{1}{2}$ " (13mm)
GYPSUM BOARD

WET SET DOWELS TO
MATCH VERTICAL
REINFORCEMENT
BETWEEN POURS OR
AS SPECIFIED

GRANULAR FILL
CONCRETE SLAB

NUDURA FLOOR
TECHNOLOGY



DISCLAIMER NOTICE:
SPECIFIC INFORMATION
REQUIRED FOR COMPLIANCE
WITH LOCAL CODES IS THE
RESPONSIBILITY OF THE
DESIGNER



NUDURA

INTEGRATED BUILDING TECHNOLOGY

Building Value.

NUDURA 6" (152mm) FORM UNIT
STEM WALL AT SLAB ON GRADE
BRICK VENEER FINISH
INSULATED

REV. NO.
003 KS
REV. DATE:
FEB 2010
DRAWN BY:
T. VAN CLIEAF

DWG NO.
B6C10
SCALE:
1 : 8