

NUDURA 10" (254mm)  
STANDARD FORM UNIT

BRICK VENEER c/w  
1" (25mm) AIR SPACE  
AND BRICK TIES

HORIZ/VERT  
REINFORCEMENT AS PER  
CODE OR AS SPECIFIED

THROUGH WALL  
FLASHING AS PER  
CODE OR AS  
SPECIFIED

$\frac{3}{16}$ " (5mm) ACRYLIC  
PARGE COAT

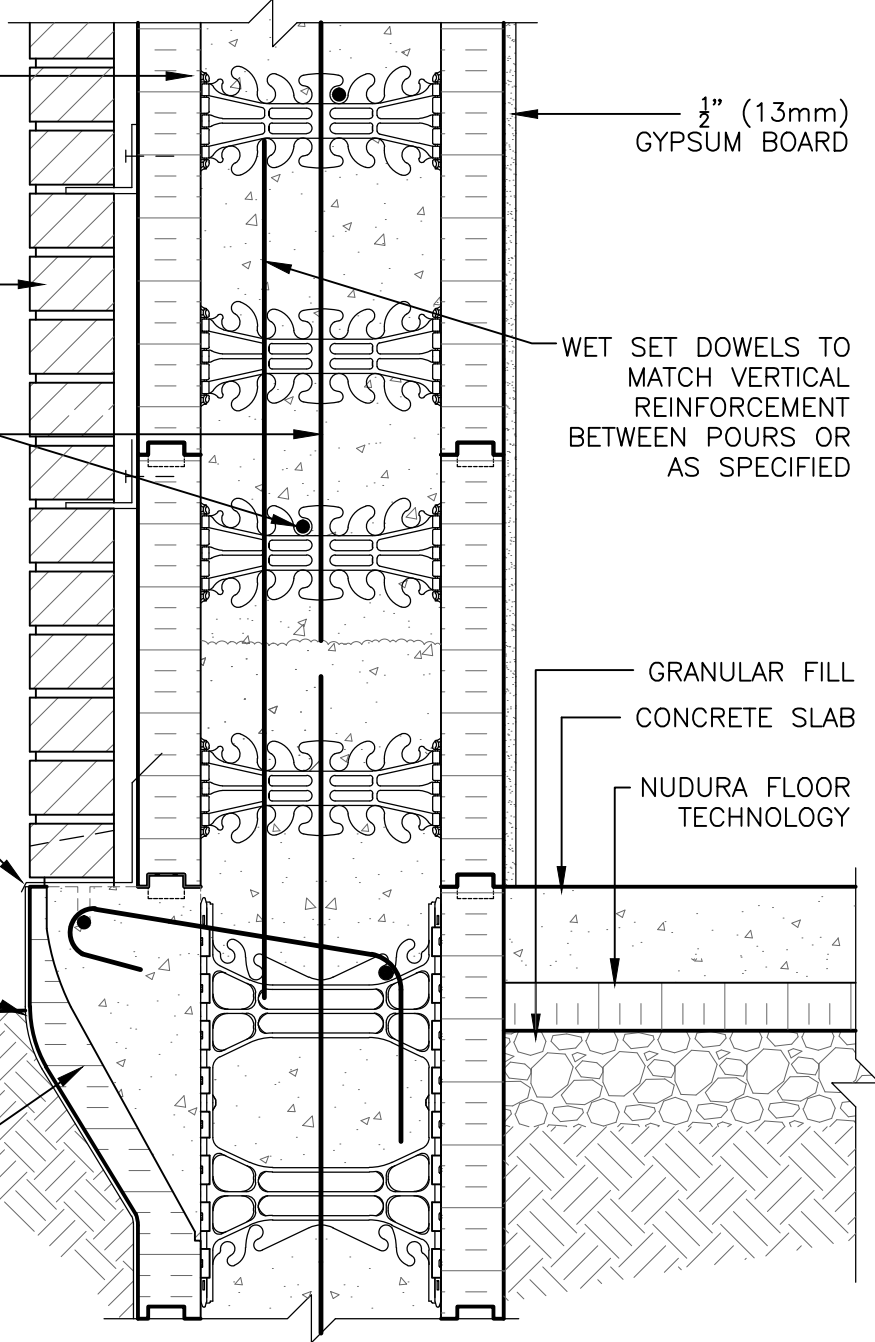
NUDURA 10" (254mm)  
BRICK LEDGE FORM  
UNIT

$\frac{1}{2}$ " (13mm)  
GYPSUM BOARD

WET SET DOWELS TO  
MATCH VERTICAL  
REINFORCEMENT  
BETWEEN POURS OR  
AS SPECIFIED

GRANULAR FILL  
CONCRETE SLAB

NUDURA FLOOR  
TECHNOLOGY



**DISCLAIMER NOTICE:**  
SPECIFIC INFORMATION  
REQUIRED FOR COMPLIANCE  
WITH LOCAL CODES IS THE  
RESPONSIBILITY OF THE  
DESIGNER



NUDURA 10" (254mm) FORM UNIT  
STEM WALL AT SLAB ON GRADE  
BRICK VENEER FINISH  
INSULATED

REV. NO. 003 KS	DWG NO. B10C07
REV. DATE: FEB 2010	
DRAWN BY: T. VAN CLIEAF	SCALE: 1 : 8