

OPENING REINFORCEMENT
AS PER CODE OR AS
SPECIFIED

NUDURA 6" (152mm)
STANDARD FORM UNIT

1/2" (13mm)
GYPSUM BOARD

HORIZ/VERT
REINFORCEMENT AS
PER CODE OR AS
SPECIFIED

DIRECT APPLIED
ACRYLIC FINISH

FASTEN STUCCO MESH TO
BACK OF TEMPORARY BUCK
TO ALLOW MESH TO BOND
WITH CONCRETE

DECORATIVE EPS FOAM TRIM
APPLIED TO NUDURA FORM
USING ADHESIVE

VAPOR BARRIER
SEALED TO INTERIOR
EDGE OF FRAME

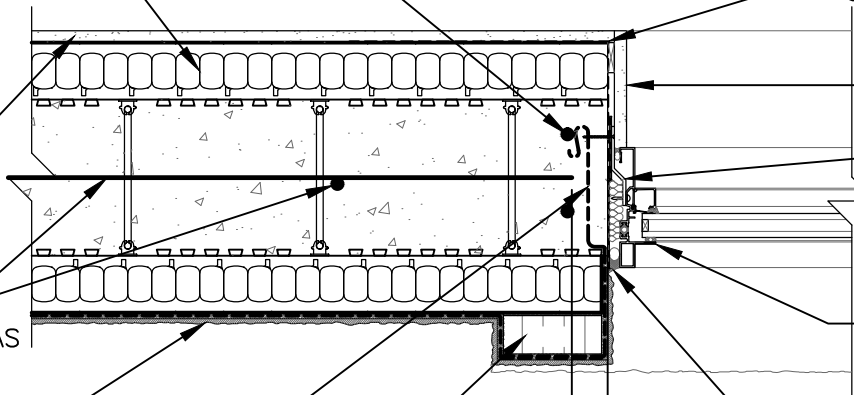
GYPSUM BOARD
RETURN TO FRAME

ALUMINUM JAMB
ANCHOR CLIPS

WINDOW FRAME BY
OTHERS

FOAM BACKER ROD AND
CONTINUOUS CAULKING
AROUND WINDOW FRAME
c/w DRAIN SLOT AT
CENTER OF SILL

1 1/2"
(38mm) MIN.
COVER



DISCLAIMER NOTICE:
SPECIFIC INFORMATION
REQUIRED FOR COMPLIANCE
WITH LOCAL CODES IS THE
RESPONSIBILITY OF THE
DESIGNER



NUDURA

INTEGRATED BUILDING TECHNOLOGY

Building Value.

NUDURA 6" (152mm) FORM UNIT
WINDOW JAMB DETAIL
EXTERIOR FINISH AS SPECIFIED
ALUMINUM FRAMED WINDOW
CONCRETE MOUNTED

REV. NO. 000	DWG NO. E6D13
REV. DATE: JUNE 2010	
DRAWN BY: K. STILL	SCALE: 1 : 8