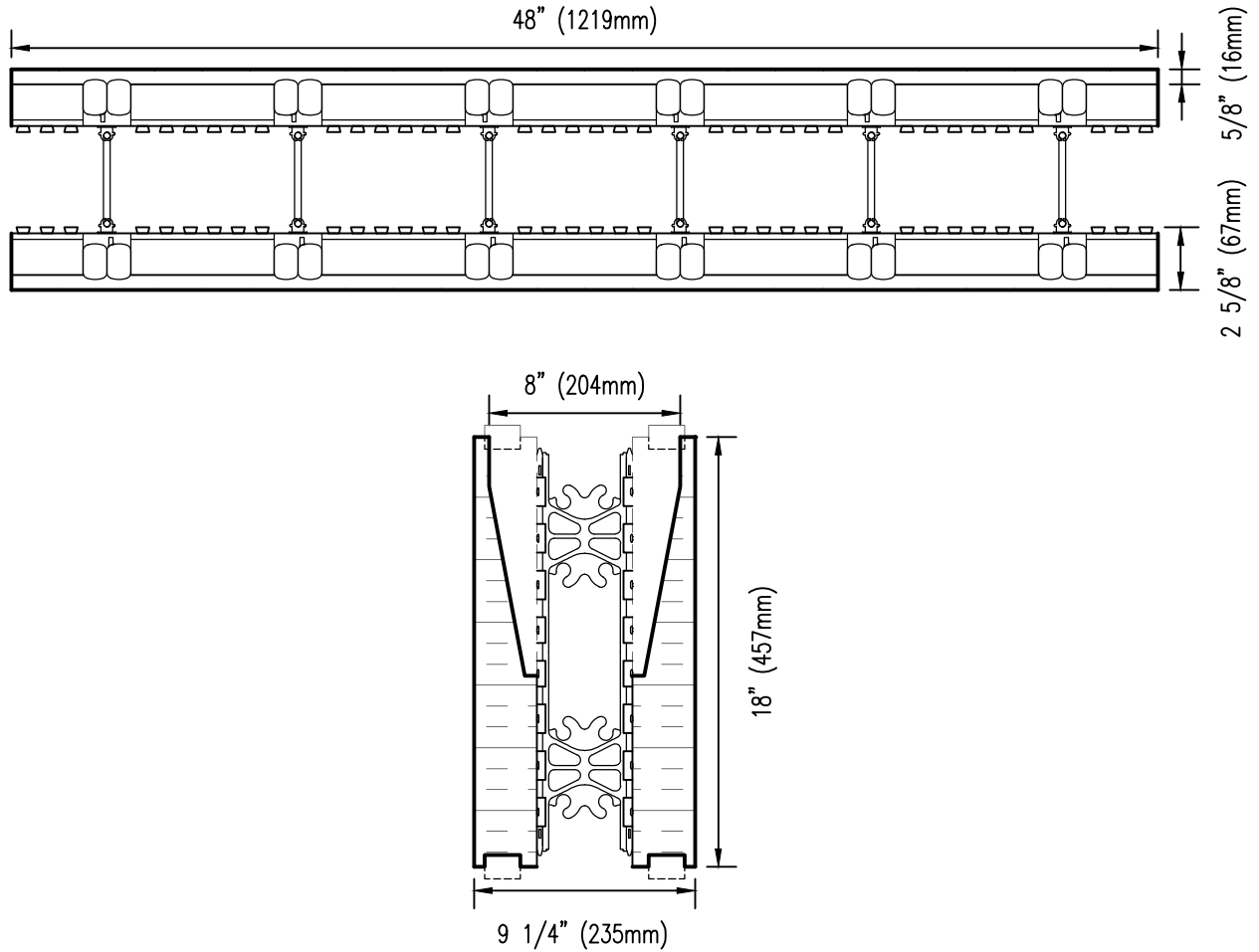


NOTE: PRODUCT LENGTH  
 SUBJECT TO REGIONAL  
 AVAILABILITY IN 4' (1219mm)  
 OR 8' (2438mm) LENGTHS



DISCLAIMER NOTICE:  
 SPECIFIC INFORMATION  
 REQUIRED FOR COMPLIANCE  
 WITH LOCAL CODES IS THE  
 RESPONSIBILITY OF THE  
 DESIGNER



**NUDURA**

INTEGRATED BUILDING TECHNOLOGY

*Building Value.*

NUDURA 4" (102mm)  
 TWO SIDED TAPER TOP FORM UNIT

REV. NO.  
 002 KS  
 REV. DATE:  
 JULY 2011  
 DRAWN BY:  
 T. VAN CLIEAF

DWG NO.  
 A4A05  
 SCALE:  
 1 : 8